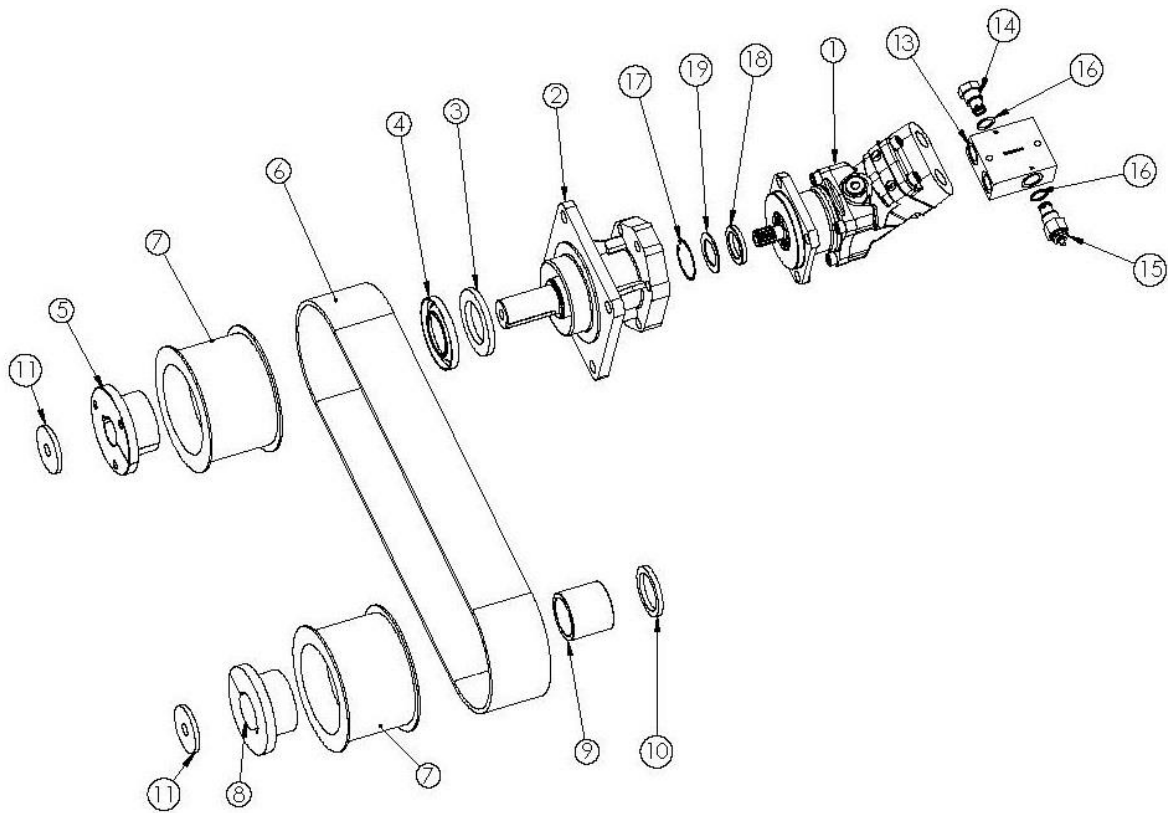


## MULCHER – C510 MOTOR PACKAGE



ITEM #	PART NUMBER	DESCRIPTION	QTY.
1	D001844	C510 Motor part (34cc)	1
2	D001865	251313 13Tx B-mount MDH-40 Bearing Mount Stand Off	1
3	060183	Lip Seal Output - Exterior -60 x 90 x 8	1
4	240567	Seal Protector - Exterior Output	1
5	D001022	1.5" Tapper Lock Hub for Large Timer Pully	1
6	M2019	MF860 Belt	1
7	B2023	Big Timer Pulley	2
8	B2024	2in Hub	1
9	D001085	Hub Spacer for 2" Rotor Shaft	1
10	D001345	2" Pulley Spacer	1
11	D001361	Rotor Shaft Washer	2
12	D001845	C510 Relief and Anti-Cav Remote Valve block Sunfab Threaded Port (Sun Motor)	1
13	D002137	Block	1
14	D002136	Check Valve for D001845 Block	1
15	D002135	Relief Valve for D001845 Block	1
16	D002138	#116 O-Ring	2
17	D002133	Snap Ring for Sunfab Motor SAE-C	1
18	D001366	High Pressure Shaft Seal for Sunfab Motor SAE-C	1
19	D002132	Shaft Washer for Sunfab Motor SAE-C	1